

Three colorful kites (blue, yellow, and pink) are arranged vertically on the left side of the slide, with the word 'Kite' written vertically next to each one.


Breaking the Cycle of Deprivation in Banbury and Oxford

Partnership Networking Event

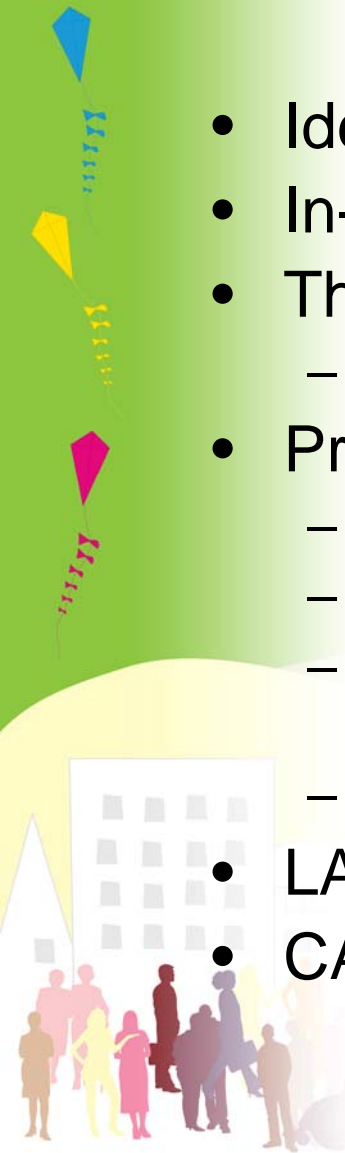
12.30 Lunch and networking

13.00 Presentation and table discussions

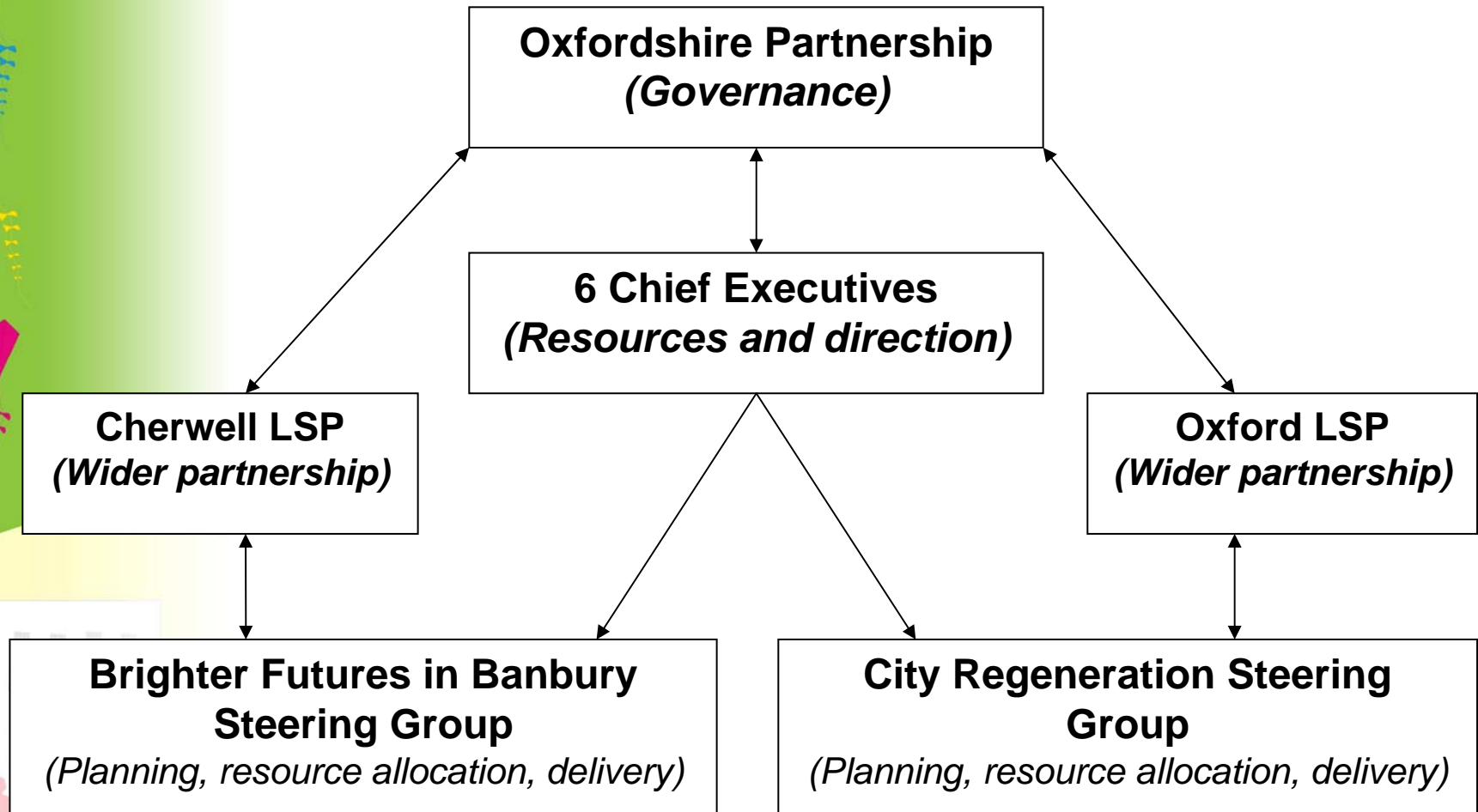
Summary

- 
- A decorative graphic on the left side of the slide. It features three colorful kites (blue, yellow, and pink) flying upwards on a green background. Below the kites is a stylized white building with a grid of windows. At the bottom of the graphic, there is a silhouette of a diverse group of people standing together.
- Background – the story so far
 - Work already under way
 - Brighter Futures in Banbury
 - Oxford City Regeneration
 - Programme Management and how to keep in touch
 - Developing the Oxfordshire Model
 - Questions and round table discussion

The story so far

- 
- A decorative graphic on the left side of the slide. It features three colorful kites (blue, yellow, and pink) flying upwards on a green background. Below the kites is a stylized white building with a grid of windows. At the bottom of the graphic are silhouettes of a diverse group of people in various colors (brown, yellow, pink, blue, purple, grey).
- Identifying the target areas
 - In-depth needs assessment
 - The role of the “6 Chiefs”
 - Principles and Aims
 - Priorities
 - Giving children a good start in life
 - Physical environment and housing
 - Employability – with an overall aim of 100% young people in education, employment or training
 - Health inequalities
 - LAA reward grant and the distraction factor
 - CAA Priority in 2010/11

Who's Who



What's going on – Family Intervention Project

- Building on existing successful work,
- Additional resources have been secured for 2010 -2011
- Risk factors
 - A family member in custody
 - A female parent involved in offending
 - Those at risk of housing eviction & anti-social behaviour
- 13 staff will intensively support up to 80 families this year

What's going on – “Diversionsary activity”

- Diversionsary Activities for young people
 - Identifying the needs of young people in the locality
 - Identifying existing providers and building on good practice
 - Co-ordinating the approach to bridge gaps and reduce barriers
 - Providing ‘safety net’ to reduce fall out
 - Capturing impact and outcomes and ensuring sustainability
 - Ensuring support and involvement for young people and parents

Brighter Futures in Banbury

- Target wards – Neithrop, Ruscote, Grimsbury
- Steering Group – CDC, OCC, TVP, PCT and BTC
- In-depth understanding of issues affecting local people
- Much already happening – very good resource base to make a difference

Brighter Futures in Banbury

- Work streams with new activities and *clear outcomes*
 - Safe and Strong communities (TVP lead)
 - Housing and Environment (CDC lead)
 - Health and Well Being (PCT lead)
 - Education and Attainment (OCC lead)
 - Financial and Employment Support (CDC lead)

A decorative graphic on the left side of the slide. It features three colorful kites (blue, yellow, and pink) flying upwards, connected by a vertical line. Below the kites is a stylized white building with a grid of windows. At the bottom left, there are silhouettes of a diverse group of people in various colors (red, yellow, blue, purple, green).

Brighter Futures in Banbury

Emerging Activity

- Raising Aspiration and Improving Resilience
- Community Engagement
- Working smarter with each other
- Emphasis on most in need – shared casework
- Referrals for Prevention

Oxford City Regeneration

- Target areas Blackbird Leys, Greater Leys, Rose Hill & Littlemore, Barton
- Regeneration Framework sets out need.
- Steering group including

City Council

County Council

OCVA

PCT

Police

Brookes University

Job Centre Plus

Oxford City Regeneration

Work streams with new activities and *clear outcomes*

- Place – physical regeneration, housing
- Community Participation and Confidence
- People – health, employability
- Economy and infrastructure

Oxford City Regeneration

Emerging Activity

- Community Engagement and resident training
- Working smarter with each other
- Emphasis on most in need – shared casework
- Staff training and networking across agencies


Programme Management

A decorative graphic on the left side of the slide, consisting of several colorful triangles (blue, yellow, pink) and arrows pointing downwards, with the word 'Mission' written vertically in a stylized font.

Principles of how all work is done

- Planning based on evidence of good practice
- Building on what is already there
- Working more smartly, with better coordination
- Using LAA and other money where it will be most cost effective
- Evaluation at every stage
- Building in sustainability
- Community involvement throughout the programme

The Oxfordshire Model

- 
- A vertical decorative graphic on the left side of the slide, consisting of a blue diamond at the top, followed by a yellow diamond, and a pink diamond at the bottom. Between these diamonds are vertical lines of small, repeating text that is difficult to read but appears to be 'MIND'.

Future involvement

andrew.maliphant@oxfordshirepct.nhs.uk

07500 228294

Questions



Table Discussions

How can you help us make working links with your partnerships or organisations?

How can we make sure you
are kept up to date with
what is going on?

What immediate ideas do you have for taking this forward?